

Wave Wallpaper

Wave is a fluid, graphic design that rides the line between retro cool and timeless simplicity. Inspired by the sinuous forms of 60s and 70s art, its bold scale and rhythmic flow makes it perfect for both statement spaces and quietly curated rooms. Pair it with clean lines or maximalist textures – Wave adapts to your mood.

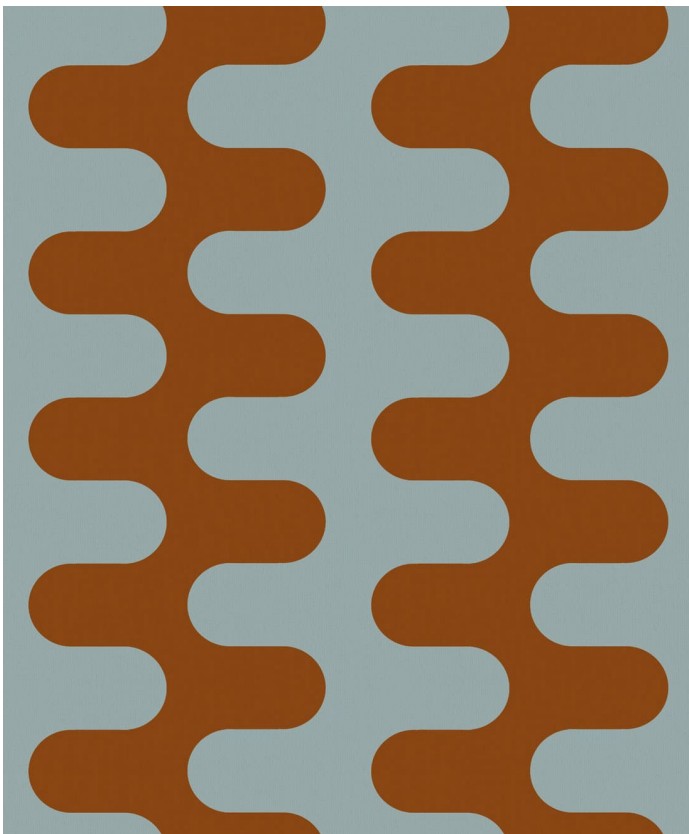


SUSTAINABILITY

- Made to order within 5-7 business days using the latest eco-friendly printing tech. That means no over-production and waste like regular wallpaper brands.
- Our PVC Free wallpaper base is sourced from sustainably managed forests.
- We print all wallpapers using odorless water-based ink. GREENGUARD GOLD Certified to standards for low chemical emissions into indoor air.
- Milton & King's wallpapers are of the highest quality, are environmentally friendly, and totally 100% vinyl-free.

BATCHING & DELIVERY

- **Note:** Samples of this wallpaper are provided for review of the material, pattern scale and print technique – they are not intended to be used for color matching purposes. There can be slight shifts in color between runs, so your wallpaper may vary slightly from sample coloring.
- Please ensure that you order the correct amount as we do not guarantee that rolls printed in different batches will be an exact match.
- All Milton & King orders are printed and shipped with love from Dallas, Texas.
- Industry leading production times on all orders.



ROLL DIMENSIONS	24" (61.5cm) x 33ft (10.05m)
MATERIAL/BASE	Matte Non-woven
PATTERN REPEAT	5.9" (15cm)
PATTERN MATCH	Straight Match
FINISH	Pre-trimmed Butt Join
CLEANABILITY	Spongeable
USAGE	Domestic & Commercial



MILTON & KING®

SHOWROOM ADDRESS & OPENING HOURS

Phone: 469.372.5774
900 Dragon Street
Design District
Dallas Texas 75207

Mon to Fri: 9am-5pm
Saturday: Closed
Sunday: Closed

GENERAL ENQUIRIES, ORDER & PRODUCTS

469.372.5774
Mon-Fri: 8am-5pm (CST)
support@miltonandking.com
www.miltonandking.com

Non-woven Wallpaper

CERTIFICATIONS

This wallpaper has obtained the following Fire and Flammability classifications.

North America

"Class A" for ASTM Designation E84-15a. Comparable to UL 723, ANSI/NFPA No. 255 & UBC No. 8-1.0

Building Codes Cited:

National Fire Protection Association, ANSI/NFPA No. 101, "Life Safety Code". International Building Code, Chapter 8, Interior Finishes, Section 803.

Please [Contact Us](#) to request a copy of the fire certificates and test reports.

MILTON & KING®

SHOWROOM ADDRESS & OPENING HOURS

Phone: 469.372.5774
900 Dragon Street
Design District
Dallas Texas 75207

Mon to Fri: 9am-5pm
Saturday: Closed
Sunday: Closed

GENERAL ENQUIRIES, ORDER & PRODUCTS

[469.372.5774](tel:469.372.5774)
Mon-Fri: 8am-5pm (CST)
support@miltonandking.com
www.miltonandking.com

ADDITIONAL INFO

At Milton & King we have a huge range of designer wallpapers for you to choose from whether you're decorating your hallway, living room, bedroom or dining room we have a wallpaper to suit your style and budget! With more than 500 wallpapers, we are bound to have the statement wallpaper you have been looking for. Our luxury collections are produced using a high quality non-woven base with all the precision and care you would expect from a global wallpaper manufacturer. Combined with superior customer support and quick delivery times throughout the US.

Non-woven wallpaper advantages

The most user-friendly wallpaper on the market.

- Sourced from FSC Certified Forests and printed with water-based ink. Milton & King's wallpapers are of the highest quality, are environmentally friendly, and totally 100% vinyl-free.
- **Breathable** – These high quality wallpapers are breathable, helping them endure mould and mildew conditions. Thus, perfect to decorate bathrooms, kitchens and laundries (direct contact with water is not recommended).
- **Paste-The-Wall** – Made from both natural and non-porous synthetic fibres. These non-woven wallpapers will not absorb moisture from the adhesive. Simply apply the paste directly to the wall. The paper will not expand or contract with no booking time required.
- The wallpaper rolls are finished precisely to have no overlap. Meaning the panels simply butt up to each other for ease of installation.
- **Spongeable** – Dirt, dust, and other marks can be cleaned with a slightly damp sponge (do not use any solvents).
- **Durable** – Our designer wallpapers are also heard wearing and tear-resistant. This is a great advantage as the wallpapers will not get torn during installation or removal.
- **Easy to Remove** – Once completely dry, non-woven wallpapers will come off easily. It should come down in full sheets with no need for the dreaded steamer or water. Without causing any damage to the walls upon their removal
- **Roll Size** – 24" wide x 33' long. Our rolls are the equivalent to a US double roll providing 65 square feet per roll.