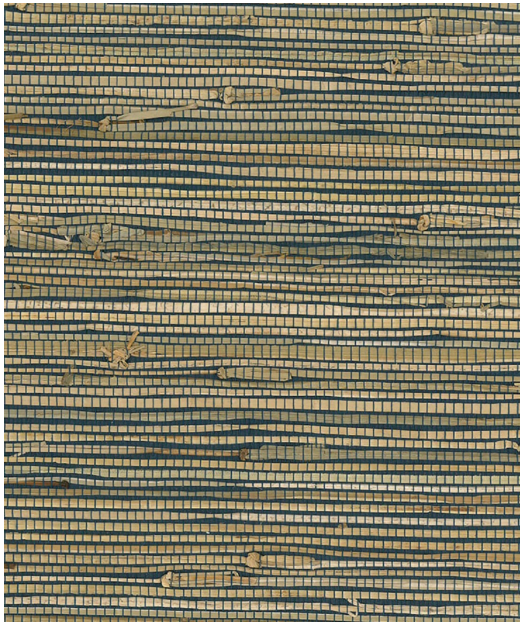


Rushcloth Grasscloth Wallpaper

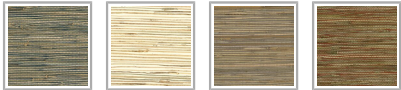
Rushcloth Grasscloth Wallpaper brings a timeless charm to residential, commercial, and hospitality spaces. Its versatile design complements various settings, adding an air of comfort to homes, professionalism to offices, and an inviting warmth to hospitality venues.

Designed for residential, commercial, and hospitality settings, our Grasscloth wallpaper is a versatile masterpiece. Whether you're transforming a cozy corner at home, enhancing a commercial environment, or curating a welcoming atmosphere in a hospitality establishment, our Grasscloth wallpaper offers a timeless canvas for redefining spaces with elegance and style. Embrace the allure of contemporary design and natural textures to redefine your surroundings today.

All Grasscloth & Natural sales are final, no refunds or exchanges.



ROLL DIMENSIONS	24ft (7.3m) x 3ft (91.4cm)
PATTERN MATCH	Random/Free
FINISH	Matte
CLEANABILITY	Lightly vacuum to remove surface dirt
USAGE	Domestic & Commercial
APPLICATION	Paste The Paper
REMOVAL	Wet Removal
LIGHTFAST RATING	Moderate Lightfastness



SUSTAINABILITY

- **Natural and Renewable Materials:** Our grasscloth wallcoverings are made from natural seagrass fibres. These fibres are renewable resources, as they come from plants that can be replanted and harvested sustainably.
- **Grasscloth and natural wallcoverings are biodegradable,** meaning they can naturally break down over time without causing harm to the environment. They can also be composted, reducing waste and landfill burden.
- **Low VOC and Non-Toxic:** Many grasscloth and natural wallcoverings are manufactured using water-based adhesives and inks with low volatile organic compound (VOC) content. This reduces indoor air pollution and improves indoor air quality, making it healthier for occupants.
- **No PVC or Vinyl:** Grasscloth and natural wallcoverings are generally free from PVC (polyvinyl chloride) and vinyl, which are materials commonly found in traditional wallcoverings. Avoiding PVC and vinyl reduces the use of harmful chemicals and synthetic materials.

BATCHING & DELIVERY

- **Note:** Samples of this wallcoverings are provided for review of the material, pattern scale and print technique – they are not intended to be used for color matching purposes. There can be slight shifts in color between runs, so your wallcovering may vary slightly from sample coloring.
- Please ensure that you order the correct amount as we do not guarantee that rolls printed in different batches will be an exact match.
- All Milton & King orders are shipped with love from USA.

MILTON & KING®

SHOWROOM ADDRESS & OPENING HOURS

Phone: 469.372.5774
900 Dragon Street
Design District
Dallas Texas 75207

Mon to Fri: 9am-5pm
Saturday: Closed
Sunday: Closed

GENERAL ENQUIRIES, ORDER & PRODUCTS

469.372.5774
Mon-Fri: 8am-5pm (CST)
support@miltonandking.com
www.miltonandking.com

- Industry leading production times on all orders.

Grasscloth Wallpaper

MILTON & KING®

SHOWROOM ADDRESS & OPENING HOURS

Phone: 469.372.5774
900 Dragon Street
Design District
Dallas Texas 75207

Mon to Fri: 9am-5pm
Saturday: Closed
Sunday: Closed

GENERAL ENQUIRIES, ORDER & PRODUCTS

469.372.5774
Mon-Fri: 8am-5pm (CST)
support@miltonandking.com
www.miltonandking.com

ADDITIONAL INFO

At Milton & King we have a luxury of grasscloth and natural wallcoverings for you to choose from whether you're decorating your hallway, living room, bedroom or dining room we have a wallpaper to suit your style and budget! With more than 600 wallpapers, we are bound to have the statement wallpaper you have been looking for. Grasscloth and natural wallcoverings can be used in residential, commercial and hospitality interior design projects to add features with natural and specialty materials. Combined with superior customer support and quick delivery times throughout the US.

Natural resource wallcovering advantages

- Anti-microbial features – Grasscloth and natural wallcoverings contain bactericides and mildew inhibitors to discourage the growth of mold and mildew under normal conditions.
- Paste-The-Paper – Made from both natural fibres. These wallcoverings will expand from the adhesive. Simply apply the paste directly to the paper, be generous but avoid excessive paste. They will expand with booking time required.
- Book the wallcovering – “Booking” is a process where you fold the pasted sides of the wallcovering together, adhesive-to-adhesive, with the pasted side facing inwards. This allows the paste to activate and helps prevent it from drying out before you hang the wallcovering. Leave the booked wallcovering a few minutes.
- The wallcovering rolls are finished precisely to have no overlap. Meaning the panels simply butt up to each other for ease of installation.
- Cleanable – Dirt, dust and other marks can be simply cleaned using a damp cloth with soapy water or with a light vacuum to remove surface dirt.
- Wet removal – is a common method for removing grasscloth wallcovering. However, because grasscloth and natural is made from natural material, it can be delicate and requires a bit of extra care during the removal process to avoid damaging the walls.
- Roll Size – 24ft (7.3m) x 3ft (91.4cm).