



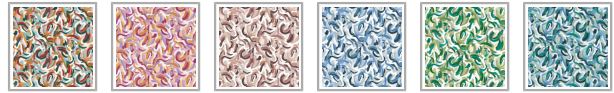
## COMMERCIAL VINYL

# Impasto Vinyl Wallpaper

Impasto bursts with expressive energy, channelling the tactile joy of thick, colorful brushstrokes into a celebration of movement and shape. Inspired by the painter's palette and the spontaneous rhythm of traditional artistry, this design bends, dips and sways, creating a vibrant dance of lively squiggles across the wall.

Every stroke feels sculpted and intentional, layered with texture and personality. The bold yet balanced composition radiates happiness and artistic freedom, making Impasto an ideal choice for commercial interiors that embrace creativity, color and modern playfulness.

Perfect for hospitality, creative workspaces or anywhere that calls for inspiration and levity, Impasto transforms blank walls into joyful statements of self-expression.



PATTERN REPEAT	65.4" (166cm)
PATTERN MATCH	Straight
WEIGHT	21 oz.per lineal yd
MEDIA SIZE	Width 52" (132cm)
BACKING	Non-Woven (Fabric backing available on <a href="#">request</a> )
FINISH	Untrimmed - Double Cut Install
CLEANABILITY	Scrubable
USAGE	Domestic & Commercial
MATERIAL COMPONENTS	Made in the U.S.A.



## BATCHING & DELIVERY

- **Note:** Samples of this wallpaper are provided for review of the material, pattern scale and print technique - they are not intended to be used for color matching purposes. There can be slight shifts in color between runs, so your wallpaper may vary slightly from sample coloring.
- Please ensure that you order the correct amount as we do not guarantee that rolls printed in different batches will be an exact match.
- All Milton & King orders are printed and shipped with love from Dallas, Texas.
- Industry leading production times on all orders.

## MILTON & KING®

### SHOWROOM ADDRESS & OPENING HOURS

Phone: 469.372.5774  
900 Dragon Street  
Design District  
Dallas Texas 75207

Mon to Fri: 9am-5pm  
Saturday: Closed  
Sunday: Closed

### GENERAL ENQUIRIES, ORDER & PRODUCTS

[469.372.5774](tel:469.372.5774)  
Mon-Fri: 8am-5pm (CST)  
[support@miltonandking.com](mailto:support@miltonandking.com)



# Commercial Vinyl Wallpaper

## FIRE SAFETY & LIFE SAFETY

Our vinyl wallcoverings with non-woven backing meet the most rigorous fire and life safety standards required for commercial and public environments. When installed correctly, they offer peace of mind with certified Class A fire performance.

### KEY FIRE CERTIFICATIONS:

#### ASTM E-84 (STEINER TUNNEL TEST):

- Flame Spread Index: 5
- Smoke Developed Index: 30
- **Class A Rating**  
(Tested on fiber cement board with Roman Pro 838 adhesive)

#### NFPA 101® Life Safety Code® compliant

(Flame spread and smoke development performance support code acceptance for interior finishes)

#### EN 13501-1:2007 + A1:2009

- B-s1, d0 Classification (Low smoke production, no flaming droplets) for EU compliance

#### ASTM G21 – Anti-microbial tested

(Resistant to mold and mildew under normal conditions)

#### California CDPH Standard Method v1.2 / CA 01350

(TVOC < 0.5 mg/m<sup>3</sup> – Low-VOC certified)

## TESTING & CERTIFICATION OVERVIEW

Federal Spec CCC-W-408D	Type II, Class A (Commercial Wallcovering)
Wallcovering Assoc. CFFA-W-101	Type II, Class A Vinyl Coated Fabric Wallcovering
EN 13501-1	B-s1, d0 Certified
ASTM E-84 / NFPA 255 / UL-723 / CAN S102	Flame Spread: 5, Smoke Dev.: 30 – Class A
NFPA 286 (Corner Burn Test)	Tested and compliant when applied over approved substrates
NSF/ANSI 342	Sustainability certified
California Prop 65	Compliant – no listed harmful substances

## FIRE TESTING EXPLAINED

## ADDITIONAL INFO

Milton & King's **commercial-grade wallcoverings** are crafted to deliver exceptional durability, style, and high-performance results for a wide range of interior applications. Engineered to meet the demands of large-scale installations, they combine superior print quality with reliable on-site performance.

Our standard offering features a **Type II vinyl wallcovering with a non-woven backing**, designed for ease of installation and long-term durability. Osnaburg fabric backing is also [available upon request](#) to meet specific project requirements.

### CERTIFIED TO THE HIGHEST STANDARDS

Our commercial wallcoverings with non-woven backing are rigorously tested and exceed leading global standards for safety, durability, and performance.

- **Type II Commercial Grade** | Meets **GSA Federal Specification CCC-W-408D** for Type II wallcoverings
- **Fire Rated** | Certified **Class A** under **ASTM E-84 Tunnel Test** (Flame Spread Index: 5, Smoke Developed Index: 30)
- **European Fire Classification** | **EN 13501-1: B-s1,d0** certified
- **Mold and Mildew Resistant** | Passes **ASTM G21** for anti-microbial performance
- **Low VOC Emissions** | Meets **California CDPH Standard Method v1.2 / CA 01350** (TVOC < 0.5 mg/m<sup>3</sup> in offices, classrooms, and homes)

### ENVIRONMENTALLY CONSCIOUS & LEED CONTRIBUTING

Our vinyl wallcoverings contribute to LEED v4 certification and align with key sustainability and environmental health criteria.

- **MR Credit 6** – Rapidly Renewable Materials
- **IEQ Credit 4.1** – Low-Emitting Adhesives (when used with approved primers and adhesives)
- **IEQ Credit 4.6** – Compliant ceiling and wall systems
- **NSF/ANSI 342 Sustainability Certified**
- **Prop 65 Compliant**, Phthalate-Free, and made without brominated flame retardants

### BUILT FOR DEMANDING COMMERCIAL SPACES

Engineered for high-traffic and hygiene-sensitive environments, our vinyl wallcoverings deliver proven performance across a wide range of demanding commercial spaces.

- Healthcare and hospitals
- Hospitality and resorts
- Education facilities
- Retail and commercial corridors
- Residential interiors
- Airports, cruise ships, and transportation hubs

Milton & King's distinctive designs—celebrated for timeless style and high-definition detail—are now available in a commercial-grade format. Each

wallcovering is crafted with care, engineered for longevity, and produced to meet the performance demands of today's most dynamic interiors.

---

#### ASTM E-84 (STEINER TUNNEL TEST)

The industry's most widely recognized test for the flammability of interior finishes. Our vinyl non-woven wallcovering achieves:

- Flame Spread Index: 5
  - Smoke Developed Index: 30
- Class A certification requires flame spread  $\leq 25$  and smoke development  $\leq 450$ .

#### NFPA 286 (CORNER BURN TEST)

Simulates full-scale wall application across multiple surfaces in a controlled environment. Our vinyl non-woven wallcovering meets key performance benchmarks for flame spread, smoke release, and flashover in accordance with **NFPA 101 Life Safety Code Section 10.2.3.5.3**.

## MILTON & KING®

### SHOWROOM ADDRESS & OPENING HOURS

Phone: 469.372.5774  
900 Dragon Street  
Design District  
Dallas Texas 75207

Mon to Fri: 9am-5pm  
Saturday: Closed  
Sunday: Closed

---

### GENERAL ENQUIRIES, ORDER & PRODUCTS

**469.372.5774**  
Mon-Fri: 8am-5pm (CST)  
[support@miltonandking.com](mailto:support@miltonandking.com)  
[www.miltonandking.com](http://www.miltonandking.com)