

GRAY BENKO

# Giddy Up Fabric

Giddy Up is a wild ride through color and movement — think painterly loops, lively lines, and a rhythm that can't be tamed. It's the kind of fabric that brings a wink to a wingback or a laugh to a cushion. Perfect for anyone who loves interiors that don't take themselves too seriously. Giddy Up is joy you can sit on.



## BATCHING & DELIVERY

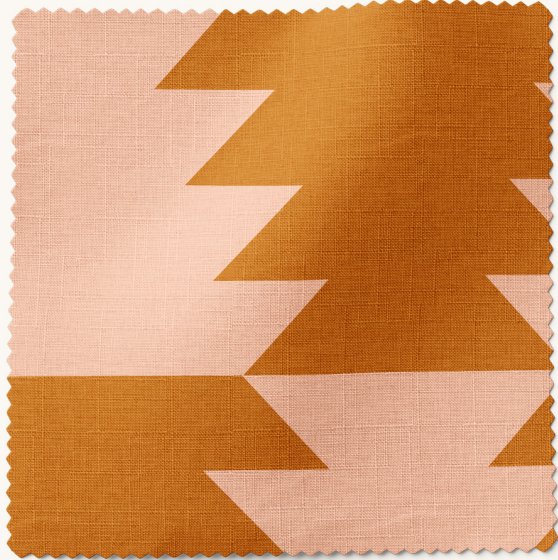
Our fabric is sold by the vertical yard.

Fabric is a final sale product. We do not accept returns or exchanges for any reason.

We offer samples for all of our fabrics. Samples are A4 in size (8.5" x 11") to show color and quality. We highly recommend purchasing a sample first to check colors. Please note our samples are pre-cut and intended for color matching purposes, so while they will contain all the colors of the pattern, they may not include full elements of the pattern.

Please note the vertical and horizontal repeats of the various patterns when calculating how much yardage you'll need for your project. We recommend overestimating so you don't run out. All Milton & King fabrics are printed-on-demand and, as a result, color variations may occur from batch to batch. Colors will also vary depending on the selected base cloth so please request a sample for a true representation.

Please note: fabric orders are produced and shipped separately from wallpaper. This means your items will arrive in more than one delivery.



<b>PATTERN REPEAT</b>	V 12.5 in (32cm) / H 10.8 in (27cm)
<b>PATTERN MATCH</b>	Straight Match
<b>USAGE</b>	Any end use
<b>USAGE</b>	Any end use



## MILTON & KING®

### SHOWROOM ADDRESS & OPENING HOURS

Phone: 469.372.5774  
900 Dragon Street  
Design District  
Dallas Texas 75207

Mon to Fri: 9am-5pm  
Saturday: Closed  
Sunday: Closed

### GENERAL ENQUIRIES, ORDER & PRODUCTS

**469.372.5774**

Mon-Fri: 8am-5pm (CST)  
[support@miltonandking.com](mailto:support@miltonandking.com)  
[www.miltonandking.com](http://www.miltonandking.com)

# Fabric

---

## MILTON & KING®

### SHOWROOM ADDRESS & OPENING HOURS

Phone: 469.372.5774  
900 Dragon Street  
Design District  
Dallas Texas 75207

Mon to Fri: 9am-5pm  
Saturday: Closed  
Sunday: Closed

---

### GENERAL ENQUIRIES, ORDER & PRODUCTS

[469.372.5774](tel:469.372.5774)  
Mon-Fri: 8am-5pm (CST)  
[support@miltonandking.com](mailto:support@miltonandking.com)  
[www.miltonandking.com](http://www.miltonandking.com)

### ADDITIONAL INFO

#### Fabric Care Instructions

Please view our complete [fabric care and stain removal instructions](#) here. This care guide has been compiled to help you select your chosen fabric with confidence and to maintain the feel, comfort and appearance of your fabric throughout its lifetime.

If you have any questions please email or [contact us](#) through one of our many touch points. We're more than happy to help!

# Fabric Cloth Info

## LINEN UNION

A beautifully balanced blend of natural and durable fibres, Linen Union offers a classic look with modern versatility. Its soft hand and subtle plain weave create a relaxed, timeless aesthetic—perfect for both upholstery and drapery and a natural complement to Milton & King's expressive prints.

COMPOSITION	90% Cotton / 10% Linen
WEIGHT	228gsm / 8 ounce per square yard
ROLL WIDTH	54" (137 cm)
FABRIC CARE	Dry Cleaning recommended
USAGE	Soft furnishings, upholstery, drapery, and interior applications
RUB TEST	24,000 revolutions - Performance Level B (Medium Duty Upholstery)
FLAMMABILITY	Passed California Technical Bulletin 117-2013 Section 1 (Cover Fabric Test).



## LINEN-LOOK PERFORMANCE WEAVE

Designed for real life, Linen Look Performance Weave combines the charm of natural linen with exceptional durability and easy care. Its refined plain weave and robust construction make it ideal for high-use spaces—from family sofas to statement cushions—where performance and beauty are woven together.

COMPOSITION	100% Polyester
WEIGHT	247gsm / 8.7 ounce per square yard
ROLL WIDTH	54" (137 cm)
FABRIC CARE	Wash at 30°C; do not bleach; tumble dry low; cool iron; dry cleanable
USAGE	Drapes, soft furnishings, tablecloths, runners, and kitchen textiles
RUB TEST	40,000 revs (BS EN ISO 12947)



## PLUSH VELVET (SOFT TOUCH)

Luxurious, tactile, and effortlessly elegant, Plush Velvet elevates any interior with its rich, directional pile and soft sheen. Crafted from durable polyester, its short, dense nap catches the light beautifully, adding depth and sophistication to upholstery, cushions, and drapery.

alike.

COMPOSITION	100% Polyester
WEIGHT	300gsm / 10.5 ounce per square yard
ROLL WIDTH	54" (137 cm)
FABRIC CARE	Wash at 30°C; do not bleach; tumble dry low; cool iron; dry cleanable
USAGE	Soft furnishings, fashion, nursery/children's décor, soft toys
RUB TEST	40,000 revs (BS EN ISO 12947)



### PURE BELGIAN LINEN

Woven from the finest flax, Pure Belgian Linen embodies craftsmanship and natural beauty. Its organic texture and breathable softness give each piece a lived-in, authentic feel that only improves with time. Ideal for drapery, upholstery, and soft furnishings, it represents luxury in its purest form.

COMPOSITION	100% Linen (Belgium and France)
WEIGHT	254gsm / 7.5 ounce per square yard
ROLL WIDTH	54" (137 cm)
FABRIC CARE	Warm or cool wash; do not bleach; tumble dry low; steam iron on reverse; dry cleanable
USAGE	Soft furnishings, fashion, nursery/children's décor, soft toys
FLAMMABILITY	Meets flammability standards under CAL TB 117-2013



### CLASSIC COTTON LINEN

A refined cotton linen blend designed to bring texture and character to printed designs. Classic Cotton Linen features a pronounced slub weave that introduces depth and movement across the surface, giving each pattern a more tactile, crafted feel. With its heavier weight and natural composition, it offers a balanced combination of softness and structure, making it well suited to both upholstery and drapery.

COMPOSITION	85% Cotton / 15% Linen
WEIGHT	380gsm
ROLL WIDTH	56" (142 cm)
FABRIC CARE	Wash at 30°C; do not bleach; tumble dry low; cool iron; dry cleanable
USAGE	Soft furnishings, upholstery, drapery, and interior applications



