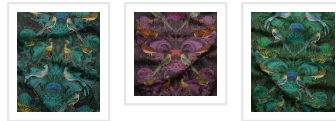




SIMCOX DESIGNS

Birdlife Fabric

Birdlife Fabric is a modern baroque fabric design combined with a flamboyant avian theme. Decorative birds inspired by prints and etchings of a bygone era perched upon a dense and lush leafy background of roman acanthus leaves and stone baroque garden ornamentation. An eclectic take on a rich and exotic era of design incorporating a restrained mirroring effect within the background elements, bringing this design firmly into the now. Originally inspired by the magnificent woodblocks prints of William Morris, a master of artistry, colour, form and particularly the design repeat. Reminiscent of baroque through to Victorian grandeur and opulence but with a modern interpretation.



SPECIAL NOTES

Our fabric is sold by the vertical metre.

We offer samples for all of our fabrics. Samples are A4 in size (21cm x 29.5cm) to show color and quality. We highly recommend purchasing a sample first to check colors. Please note our samples are pre-cut and intended for color matching purposes, so while they will contain all the colors of the pattern, they may not include full elements of the pattern.

Please note the vertical and horizontal repeats of the various patterns when calculating how many metres you'll need for your project. We recommend overestimating so you don't run out. All Milton & King fabrics are digitally printed on demand and, as a result, color variations may occur from batch to batch. Colors will also vary depending on the selected base cloth so please request a sample for a true representation. Trimming is available on request and at an additional cost.

ADDITIONAL INFO

Fabric Care Instructions

Please view our complete fabric care and stain removal instructions [here](#). This care guide has been compiled to help you select your chosen fabric with confidence and to maintain the feel, comfort and appearance of your fabric throughout its lifetime.

If you have any questions please email or [contact us](#) through one of our many touch points. We're more than happy to help!


Waterproof Upholstery

We can manufacture our designs to meet commercial requirements and more. Including Polyester with Waterproof Backing, Soil Release Finish, and Antibacterial & Antimicrobial. Fabrics designed to resist the rigors of high spillage areas. Contact our trade department to discuss the possibilities or [schedule a callback](#) with one of our trade representatives at a convenient time for you.

USAGE	Domestic & Commercial
PER YARD	100cm
SAMPLE SIZE	21cm x 29.7cm
PRINTED WIDTH	135cm
PATTERN REPEAT	64cm V - 44cm H
PRODUCT CODE	FAB-SIM100

MILTON & KING

GENERAL ENQUIRIES, ORDER & PRODUCTS

 [\(07\) 3162 5030](tel:(07)31625030)

8am – 5pm AEST / Mon – Fri

support@miltonandking.com

www.miltonandking.com/au